

USER'S MANUAL



TABLE OF CONTENTS

1. INTRODUCTION	3
2. SAFETY GUIDE	3
3. OVERVIEW	4
4. APPLICATION SCOPE	5
5. PRODUCT BRIEF INTRODUCTION	5
6. CHARACTERISTICS OF THE WHEELCHAIR	6
7. UNPACKING AND UNFOLDING	7
8. CONTROL PANEL INTRODUCTION (JOYSTICK)	9
9. WHEELCHAIR FOLDING STEPS	11
10. BATTERY DISASSEMBLY	11
11. CHARGING	11
12. BATTERY USE	12
13. PRECAUTIONS FOR OPERATION	12
14. MAINTENANCE	13
15. STORAGE	15
16. QUALITY ASSURANCE	15

Inspection Items	At any time	Weekly	Monthly	Six monthly
All parts			○	
Joystick function	○			
Brake System	○			
Connection		○		
Battery Condition	○			
Tire Condition			○	
Frame Condition				○
Front Wheel Condition		○		
Pureness	○			

14.6. Cleaning

- Do not clean the wheelchair with water or expose it directly to water.
- The surface of the wheelchair frame has a protective coating.

Therefore, it is very easy to wipe it clean with a damp cloth. Never use any chemicals to clean the vinylon seat and armrest, as they may cause the latter slip or chapped. You can use a damp cloth and neutral soapy water to clean them, and then dry thoroughly.

15. STORAGE

Your wheelchair should be stored in a dry condition free from sources of extreme temperature and dampness. Remove the batteries from the wheelchair prior to storage. Otherwise, the frame may be rusted, and the electronics may be damaged.

16. QUALITY ASSURANCE

The chassis warranty extends to 3 years. Damage caused by natural wear and tear (tyres, seats and backrests, brakes, etc.), problems caused by improper use and/or problems caused by lack of maintenance are excluded from the warranty.

Batteries are guaranteed for 6 months.

If you need a repair, please contact the dealer who sold it to you, through whom we will provide you with the necessary support

14.2. Humidity

Your wheelchair, like most electrical and mechanical equipment, is susceptible to environmental conditions. In any case, you should avoid humid environments. Direct or prolonged exposure to water or moisture may cause the wheelchair to malfunction electronically and mechanically. Water can corrode electrical components and the wheelchair structure.

14.3. Temperature

- Some parts of your wheelchair are susceptible to temperature.
- In extremely cold temperature, the battery can be frozen.
- Temperature above 55° may cause your wheelchair's speed to be reduced.

14.4. General guidelines

- Avoid beating the controller, especially the joystick.
- Avoid the exposure of your wheelchair for long time to extreme conditions, such as hot, cold or moisture environment.
- Keep the controller clean.
- Check all electric connections, including the cable and connectors of the charger, and ensure that they are all tight and secure.
- If only red LEDs on the Battery Gauge are lit, the batteries are almost out of charge. You should recharge the batteries as soon as possible.
- The frame surface has been sprayed with a clear sealant coating. You can apply a light coat of car wax to make the surface keep a high gloss.
- Check all cables. Make sure they are in good condition and are not corroded. The battery must be fully inserted in the end of the battery box.
- All wheel bearings are lubricated and sealed. There is no need to lubricate them yourself.
- Check if there are loose parts for wheel hub, drive device, and chair itself. If loose, tighten them in time.

14.5. Maintenance after use

- Switch off the battery (it is best to disconnect all connectors).
- Prevent children and unfit people from using the wheelchair.
- Store the wheelchair at normal temperature to prevent the wheelchair from reforming and to preserve its performance for a long time.
- Clean the wheelchair with a clean, soft cloth and wipe it dry. Never use chemicals to clean it (to prevent it from reforming and discolouring).

1. INTRODUCTION

Dear customer,

Welcome aboard your new power wheelchair model 1492SE ILCA 150W. Thank you for choosing a Teyder product. This model has been designed with the specific needs of the user and/or the caregiver in mind, combining an ultra-light chassis that is easy to transport, with the dual functionality of manual or electronic mode of use.

2. SAFETY GUIDE

- Be sure to read this Safety Guide carefully before use for proper use.
- If you do not follow the instructions in the "Safety Attention", the product may be damaged, people may be injured, and even life may be involved.
- If the patient or his family needs to directly operate the wheelchair, the family should understand the use of the instructions and then use it.
- Please do not let the child and the person who cannot understand the operation operate the wheelchair.
- Users are strictly prohibited from being transported by wheelchair in any form by any means of transport.
- The user is not allowed to modify the wheelchair without authorization, and the company is not responsible for any accidents.
- It is strictly forbidden for the user to stand on the pedals, otherwise the wheelchair will fall over.
- Please do not explore your body while walking, otherwise it will affect the stability of driving.

Any one is important about safety, so be sure to follow it.

* After reading the instruction manual, it should be kept in a safe place for future use.



Warning!

1. Electric wheelchairs are suitable for driving on more spacious indoors, garden paths and roads with good road conditions around the home. Do not approach motor vehicles and deep pit surfaces. When encountering obstacles in front, avoid driving around the road to prevent the risk of wheelchair tilt.
2. It is not advisable to climb long slopes to avoid overloading the circuit and motor and consuming too much power.
3. Do not use the inertia to drive the wheelchair up the steps, otherwise it will cause accident or damage to the wheelchair.

4. The auxiliary wheel installed at the rear is used to prevent the wheelchair from tipping over when the angle of the uphill is too large, cannot be removed.
5. Unless otherwise specified, all wheelchair adjustments should be carried out without a ride.
6. Before using the wheelchair, please check if the armrests, handles, etc. are loose. If so, please contact a professional technician.
7. Please do not change your posture when you lean back, otherwise the wheelchair will tip over.
8. The wheelchair should not walk on the escalator, otherwise serious personal injury will occur.
9. When the person in the wheelchair is to be transferred from the wheelchair to another place, first keep the wheelchair in the nearest and best position, point the front wheel of the wheelchair to the place where it needs to be transferred, and confirm that the wheelchair is in the brake state.
10. When transporting a wheelchair, please grasp the fixed connection part of the wheelchair, not the active part, such as the footrest device.
11. When parking is required during driving, simply release the controller handle to reset, and the electric wheelchair will automatically brake, electric wheelchair can automatically brake when parking on the slope; for safety, it is recommended to drive to a flat parking and tighten the brakes.
12. Always check if the electrical connector is well connected, if the solid screw is loose, adjust it in time.
13. The rated load of the wheelchair is 100kg. The user weighs more than 100kg. Please contact the manufacturer for special order.
14. When the wheelchair is driving on a sloping ground: the user must fasten the seat belt. When going downhill, if the slope is greater than 5 degrees, the assistant put the wheelchair back and move forward with careful confirmation. If you are facing forward when going downhill, it may cause the user to lean forward and fall.
15. During the use of the patient, routine cleaning once a day, when replacing infected patients, must be thoroughly disinfected with disinfectant.

**The product has a normal service life of 5 years from the date of delivery.

3. OVERVIEW

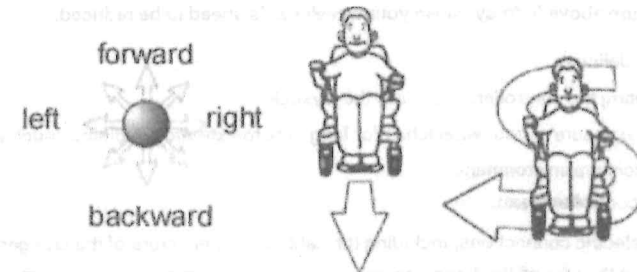
This user manual is applicable to power wheelchairs, and includes various types of safety precautions, function descriptions and maintenance information.

The graphics in this manual are for the user's reference only. Refer to the actual use of the product.

We recommend you set the lowest speed until you can operate the electric wheelchair skilfully.

To Practice the stop operation, forward and backward. Push the handle, the wheelchair moves to anywhere you want.

Firstly, ensure that it is the lowest speed when practice forward operation. After Skilled, you can practice "S" shaped turn. After you are familiar with "S" shaped turn, to practice backward operation, and pay attention to the speed control setting. And the backward speed should lower than forward speed.



14. MAINTENANCE

14.1. Maintenance

Like other motor vehicles, your power wheelchair also requires daily maintenance. Some checks can be done by you, but others require assistance from your service agent. Preventive maintenance is very important. If you follow the maintenance and testing guidelines in this section, your wheelchair will provide years of trouble-free service. If you have any questions about the care or operation of your wheelchair, contact your service agent.


WARNING!


Do not use your wheelchair unless getting help from your assistant when the wheelchair is in manual mode. Otherwise it may result in personal injury.





Do not set your wheelchair in manual mode by yourself while you are seated in the wheelchair. Otherwise it may result in personal injury. In this case, please ask your assistant to help you. Do not set your wheelchair in manual mode when it is on an incline. Otherwise, the wheelchair could be out of control to roll down by itself, and result in personal injury.

3. When the charging indicator on the charger turns green, it indicates that the power is sufficient, unplug the charger and the charging output plug when sufficient.
4. Charging method: Insert charging head of the charger into the charging port on the bottom of the controller.

WARNING!
 If your wheelchair moves accidentally, please immediately release the joystick so that the wheelchair will stop moving automatically unless the joystick is out of order.

CAUTION!
 If you connect any device other than the supplied battery charger into the charger socket on the wheelchair. It could cause permanent damage to the product.

CAUTION!
 The wheelchair won't work optimal when the environment temperature is less than minus 10 C° or above 50 C°.

WARNING!
 Never let the battery freeze, do not charge the frozen battery, which may cause personal injury and the battery damaged.

12. BATTERY USE

Fully charge your new battery prior to its initial use. This brings the battery up to about 90% of its peak performance level. Give the battery another full charge of 8-14 hours and operate your wheelchair again, the batteries will perform at over 90% of their potential. After four or five charging cycles, the batteries will be used by 100% and the life time will be extended. Please replace the battery when the battery fails. The old battery must be returned to supplier because of environmental pollution.

13. PRECAUTIONS FOR OPERATION

- Find a spacious place like square and have an assistant to help you practice until you have enough confidence to operate it by yourself.
- Be certain to shutdown the power when you transfer in- or out of the chair and adjust the speed through speed adjustment button.

4. APPLICATION SCOPE

This product is used for the elderly walking, disabled people and other groups with weak walking ability (except for those who cannot judge the exercise environment). It is especially suitable for short-distance walks in indoor, courtyard, sidewalk and other environments. The ideal travel tool for the elderly and disabled.

5. PRODUCT BRIEF INTRODUCTION

5.1. Wheelchair structure



1. Armrest
2. Controller (Joystick)
3. Cushion
4. Leg Strap
5. Footrest
6. Armrest adjuster
7. Button to fold down the backrest
8. Backrest
9. Handle
10. Front wheel
11. Rear wheel
12. Battery
13. Anti-tipper

5.2. Electrical Parameter:

1. Motor: DC24V Lithium Battery 150W 2PCS
2. Battery capacity: DC24V 6AH/12AH/ 18AH
3. Charger: ZB2402ML 100-240V 50/60Hz Maximum out current: 2A
4. Charging time: 5 – 8 hours
5. Controller: Maximum out current: 24V/30A

5.3. Performance Parameter:

1. Maximum speed: ≤6km/h
2. Gradient: 9°
3. Minimum turn radius: <900 mm
4. Range: 12 km (12Ah) / 20 km (18Ah)

Name	Overall length	Overall width	Total height	Seat width	Front wheel	Rear wheel
Parameter	103 cm	57 cm	90 cm	43 cm	18 cm	30 cm
Name	Seat height	Seat depth	Backrest height	Folding width	N.W.	Weight capacity
Parameter	48 cm	40 cm	45 cm	22 cm	19 kg	100 kg

* The graphics in this manual are for user reference only. Refer to actual product usage.



Attention!

- . If it is not used for a long time, must be fully charged every month.
- . The charging place should be well-ventilated. Do not expose it to sunlight or a humid environment when charging. The one-time charging time should not exceed 24 hours.
- . Do not use the wheelchair in manual mode when going up and down slopes.
- . When going up and down slopes, keep all four wheels on the ground, and never drive in the air (single/multiple wheels).
- . It is recommended to practice at the lowest speed for the first-time use.

6. CHARACTERISTICS OF THE WHEELCHAIR

The wheelchair is designed for both safety and comfort. This means that the features are:

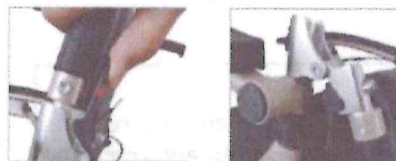
1. Motor displacement design to reduce the size when folded.
2. Aluminium alloy frame: the complete wheelchair weighs 19 kg (with battery).
3. Easy to lift with one hand, easy to store and transport.
4. Armrest can be raised.
5. Improve the telescopic fixing structure.
6. Electromagnetic brake
7. Optional Bluetooth remote control
8. Displaced Motor



9. WHEELCHAIR FOLDING STEPS

9.1. Fold Backrest

Press button and fold backrest down.



9.2. Controller (Joystick)

Pull the latch out to fold the controller down.



Note: You can choose whether to remove the anti-roll frame and pedals.

10. BATTERY DISASSEMBLY

Press the spring group next to the battery, lift the pole up, open the battery compartment, remove the battery.



11. CHARGING

1. You must use the special charger provided with your electric wheelchair to ensure safe use. Plug the charger's charging output plug into the charging socket on the back of the controller.
2. The charger power plug is plugged into a voltage and frequency matching power supply.



- **Buzzer button:** The buzzer will sound when the button is pressed.
- **Deceleration button and acceleration button:** When the power is turned on, the speed display board will show the current driving speed. Each time the acceleration key or deceleration key is pressed, it will increase or decrease in a grid. The displayed grid number represents the current speed, and the range can be determined by user adjustment.
- **Charger socket:** This socket is only used to charge the wheelchair. This socket must not be used as a power source for any other electrical device. If other electrical devices are connected, the control system or the EMC performance of the wheelchair may be damaged.

8.4. Pairing instructions with the remote control

The controller is paired with the chair once the following steps are carried out:

1. Press the power button on the remote until the green light remains solid.
2. Press the down arrow until the LED turns red.
3. Press the power button on the chair joystick until you see the LEDs.
4. Leave the "turtle" image button pressed until the LEDs change.
5. Quickly press the horn button - the LEDs will go out.
6. Press the power button on the joystick.
7. Press the power button on the remote.

9. Lift with one hand



10. Lifted Armrest



11. Telescopic anti-roll frame



7. UNPACKING AND UNFOLDING

7.1. Unfolding of the wheelchair

Press both sides down to unfold wheelchair.



7.2. Unfolding the backrest

Unfold Backrest (Lift from bottom to top).



7.3. Anti-tip installation

Install the anti-rolling frame: Align the holes at the back, insert the anti-rolling frame, and install the pins (as shown in the figure).



7.4. Engine clutch

Motor clutch gear adjustment: electric mode (hand push cannot be done); push mode, you can push wheelchair (cannot drive).



Push mode



Electric mode

7.5. Installation of footrests

Footrest Installation: Insert the upper connector into the frame tube at 45 degrees and rotate the footrest into the groove.



7.6. Controller (Joystick)

Pull the pull pin outward while flipping the controller upside down.



8. CONTROL PANEL INTRODUCTION (JOYSTICK)

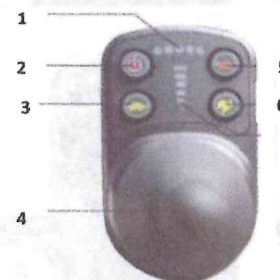
8.1. Connection to the battery

Insert the power cord into the battery hole.



8.2. Joystick control structure

Power on (make sure it is in electric mode)



1. Battery indicator all 5 lights are on fully charged
2. Power Switch
3. Slow down
4. 360° Joystick
5. Horn
6. Accelerate
7. Speed Indicator

8.3. Joystick operation

- Joystick: is an essential electronic device. The joystick is usually mounted on a handrail and is connected to the power box together with the motor and battery.
- Power switch: It is the switch that supplies power to the control system, and power is supplied to the wheelchair motor after passing through the switch. Do not use the switch button to stop the wheelchair unless there is an emergency, as this may shorten the life of the wheelchair's drive components.
- Control lever: The main function of the joystick is to control the speed and direction of the wheelchair. The further the lever is moved away from the centre, the faster the wheelchair travels, readjusts and brakes automatically when the lever is released.